

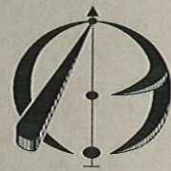
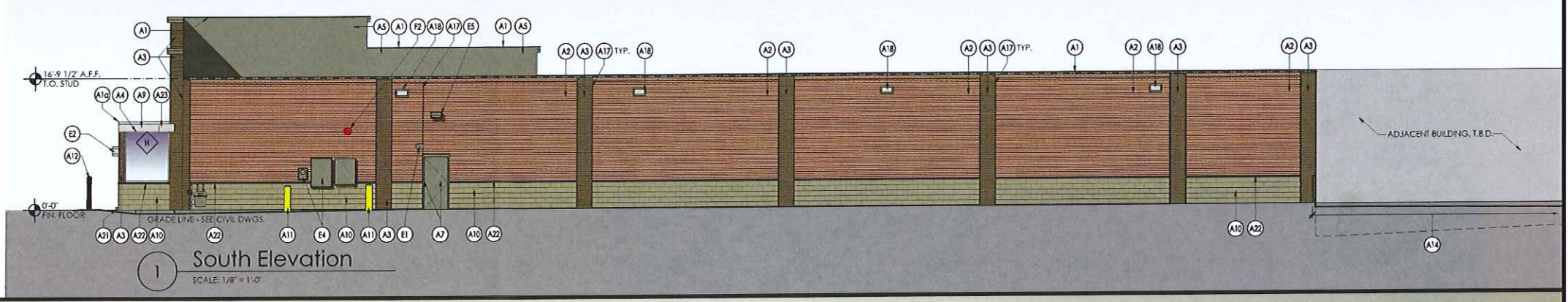
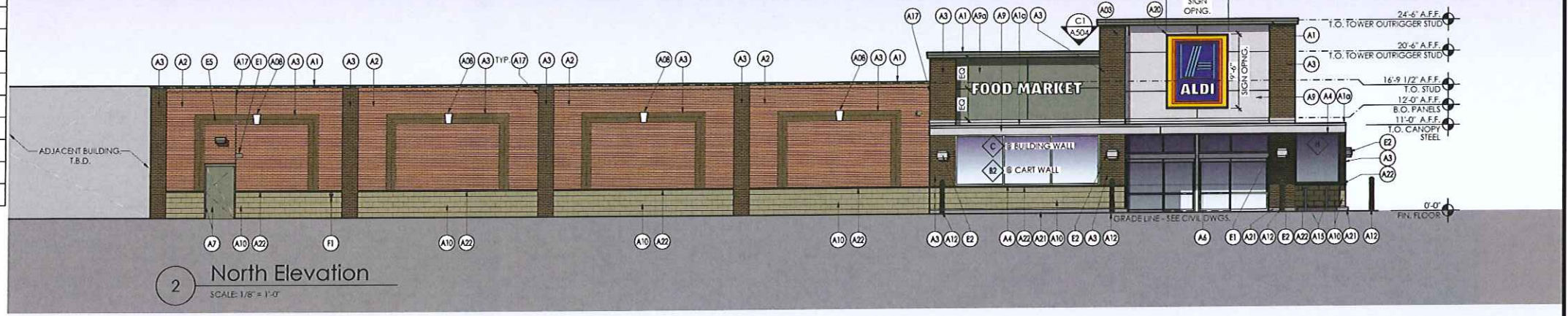
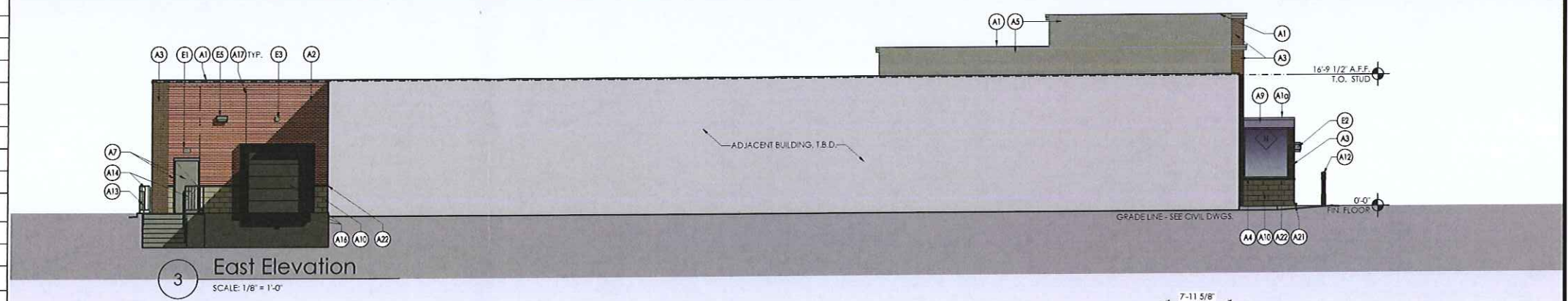
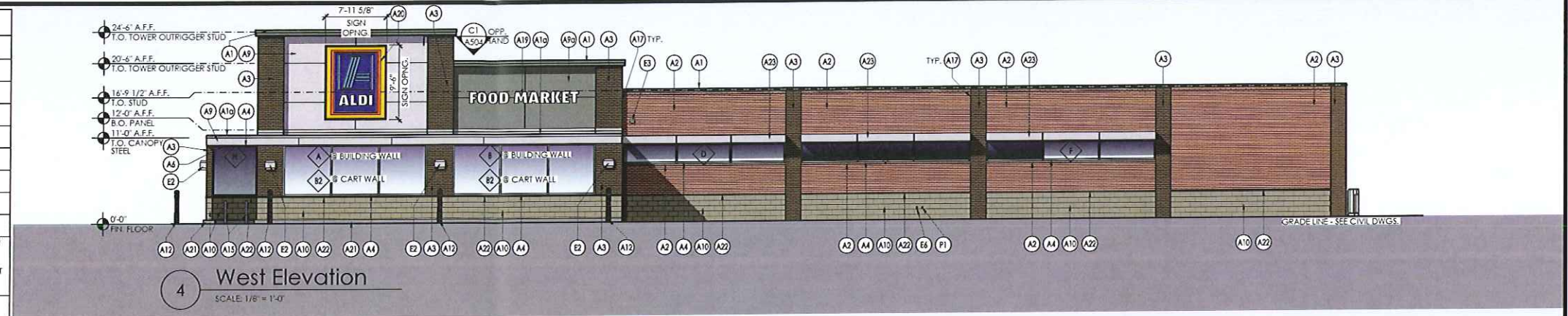
EXTERIOR FINISH SCHEDULE			
KEY	MATERIAL / MFG.	COLOR / NO.	NOTES
A1	EDGE METAL BY FIRESTONE	A1 - SLATE GRAY A10 - SILVER METALLIC	
A2	MODULAR BRICK	FIELD COLOR - SEE SPEC	FIELD AND TRANSOM WINDOW SILLS
A3	MODULAR BRICK	ACCENT COLOR - SEE SPEC	PILASTERS
A4	STOREFRONT	ANODIZED ALUM.	RE: DWG. A602
A5	MEMBRANE ROOFING	GRAY	AT BACK TOWER AND CANOPY ROOF - SEE SPECIFICATIONS APPENDIX 'B'
A6	METAL SOFFIT PANELS	SOLID PANELS - SEE SPEC	RE: DWG. A301-A304
A7	EXTERIOR PAINT BY SHERWIN-WILLIAMS	FT-10 / CL-5	RE: DWG. A603
A8	NOT USED		
A9	ALUMINUM COMPOSITE PANEL	A9 - BRIGHT SILVER A9a - SLATE GRAY	PROVIDE PANEL JOINTS AS SHOWN - AT ALDI LOGO SIGN FIELD AND FOOD MARKET SIGN FIELD. PROVIDE ONE PIECE TIGHT FIT EXTRUDED MOLDING INSTALLATION SYSTEM WITH CENTER REVEAL TRIM BETWEEN PANELS AND J TRIM AT PANEL EDGES. AT CANOPY FASCIA, PROVIDE CLIP AND CAULK INSTALLATION SYSTEM.
A10	SPLIT-FACE CMU	SEE SPEC	WATER TABLE FIELD
A11	BLRD-2	FT-10 / CL-4	RE: DWG. A603
A12	BLRD-4	FACTORY FINISH - CHARCOAL	RE: DWG. A603
A13	GUARD RAIL TYPE "A"	FT-11 / CL-5	RE: DWG. A3/A503, A603
A14	GUARD RAIL TYPE "B"	FT-11 / CL-5	RE: DWG. A3/A503, A603
A15	CART RAIL & STARTER POST	GALVANIZED	
A16	DOCK LEVELER / SEAL AND BUMPERS	LEVELER - FACTORY FINISH / SEAL AND BUMPERS - FACTORY FINISH - BLACK	PROVIDE BRICK BEHIND DOCK SEAL IN LIEU OF CAST STONE SILL
A17	CONTROL JOINT		MAX. 30' OC RE: DWG. A504
A18	OVERFLOW SCUPPER	FT-10 / CL-5	RE: DWG. C3/A503
A19	KEystone	MATCH CAST STONE SILL	1'-0" x 1'-4"
A20	NOT USED	NOT USED	NOT USED
A21	CRTB	NATURAL	RE: DWG. A603 - SEE STRUCTURAL DWGS
A22	CAST STONE SILL	SEE SPEC	WATER TABLE TRIM
A23	PREFABRICATED SUN SHADE	SILVER POWDER COAT	MANUFACTURED BY C. R. LAURENCE; RE: DWGS A306, A505
E1	EXIT DISCHARGE LIGHT	FACTORY FINISH	MOUNT @ 8'-0" A.F.F.
E2	WALL SCONCE	FACTORY FINISH	MOUNT @ 7'-6" A.F.F.
E3	EXTERNAL SIREN	FACTORY FINISH	MOUNT @ 12'-0" A.F.F.
E4	UTILITY METERING & C.T.	FACTORY FINISH	SEE ELECTRICAL DWGS
E5	EXTERIOR WALL PACK	FACTORY FINISH	MOUNT @ 12'-0" A.F.F.
E6	EXTERIOR DUPLEX RECEPTACLE	FACTORY FINISH	MOUNT @ 1'-6" A.F.F.
F1	FIRE DEPT. CONNECTION	FACTORY FINISH	SEE FIRE PROTECTION DWGS
F2	MOTOR GONG	FACTORY FINISH	SEE FIRE PROTECTION DWGS
F3	HOSE BIB	FACTORY FINISH	SEE PLUMBING DWGS
XX	STOREFRONT KEY	ANODIZED ALUMINUM	RE: DWG. A602

Please note that the colors shown here are a graphical representation to show contrast in materials only. Due to the nature of electronic media, colors may vary depending on computer or printer used.

For review of actual colors, a material sample board should be created on a project specific basis.

SIGNAGE			
DESCRIPTION	QUANTITY	SQ. FT. PER SIGN	TOTALS
TOWER SIGN	2	74.9	149.8
FOOD MARKET SIGN	2	21.3	42.6
TOTAL SIGNAGE			192.4

SIGNAGE IS SHOWN FOR REFERENCE ONLY AND SHALL BE UNDER SEPARATE PERMIT SUBMITTAL



APD ENGINEERING & ARCHITECTURE, PLLC
 615 Fishers Run
 Victor, NY 14564
 585.742.2222
 585.924.4914 fax
 www.apd.com

WINDSOR HEIGHTS, IA EXTERIOR ELEVATION